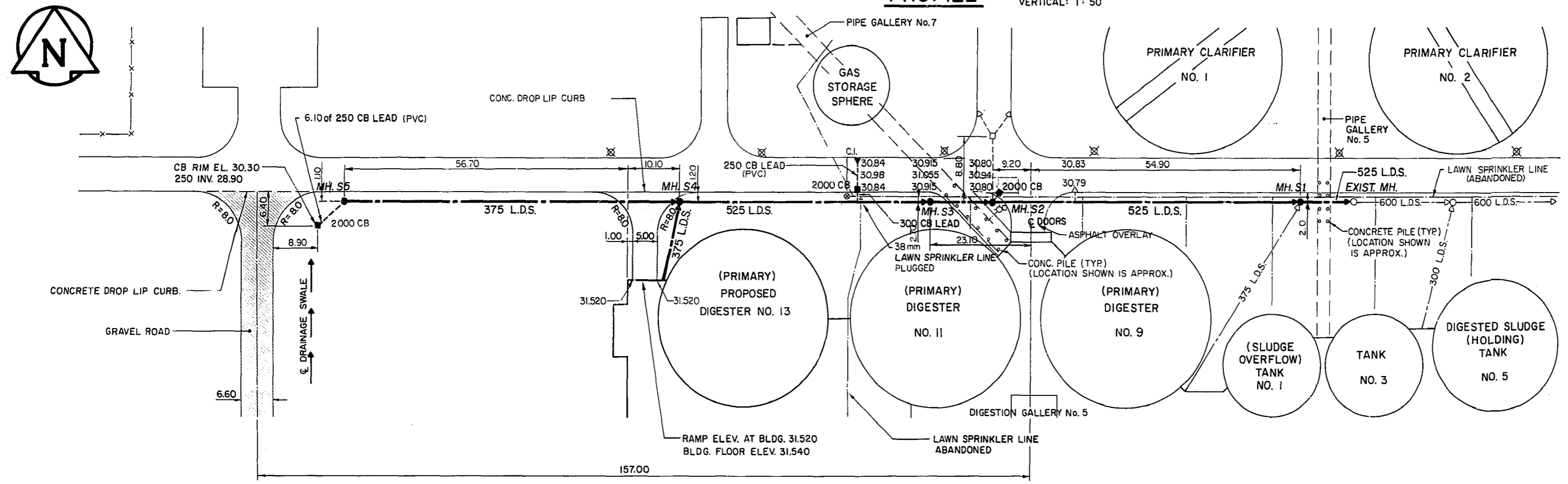
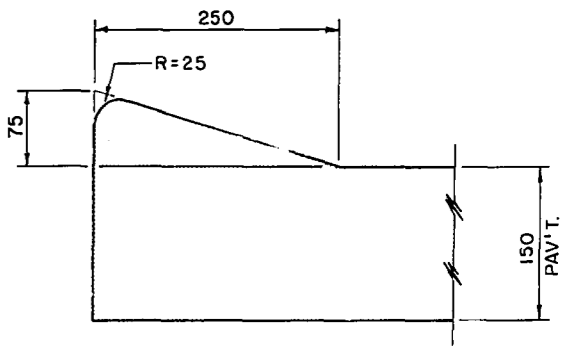


PROFILE

HOR. SCALE: 1 : 500  
VERTICAL: 1 : 50



PLAN



DROP LIP CURB DETAIL

BENCH MARK No. 13 - 026  
BENCH MARK ELEV. 231.811 m

FOR SHOP DRAWING INFORMATION  
REFER TO THE SHOP DRAWING  
CROSS REFERENCE INDEX

AS CONSTRUCTED  
APPROVED BY: [Signature]  
DATE: [Date]

"TO OBTAIN PLANT DATUM SUBTRACT 221.764 METRES"

150 mm W.M.	WATERMAIN	150 mm W.M.	HYDRO	150 mm W.M.	WATERMAIN	150 mm W.M.
300 mm L.D.S.	LAND DRAINAGE SEWER	300 mm L.D.S.	CONCRETE	300 mm L.D.S.	LAND DRAINAGE SEWER	300 mm L.D.S.
250 mm W.W.S.	WASTE WATER SEWER	250 mm W.W.S.	ASPHALT	250 mm W.W.S.	WASTE WATER SEWER	250 mm W.W.S.
○	MANHOLE	●	PROPERTY LINE	○	CONCRETE	○
□	CATCH BASIN	■	SURVEY BAR	○	PROFILE	○
△	CURB INLET	▲	LIGHT STANDARD	○	S. GUTTER	○
+	JUNCTIONS					
—	CULVERT					
—	GAS					
EXISTING	LEGEND - PLAN	PROPOSED	EXISTING	LEGEND - PLAN	PROPOSED	EXISTING
EXISTING	LEGEND - PROFILE	PROPOSED	EXISTING	LEGEND - PROFILE	PROPOSED	EXISTING



Underwood McLellan Ltd.  
Consulting Engineers and Planners  
GORE & STORRIE LIMITED  
CONSULTING ENGINEERS  
DESIGNED BY: D. SEARGEANT  
DRAWN BY: L.S.  
CHECKED BY: C.C. MACEY  
DATE: FEB/85  
APPROVED BY: [Signature]  
DATE: JUNE/85

THE CITY OF WINNIPEG  
WORKS & OPERATIONS DIVISION  
WATERWORKS, WASTE & DISPOSAL DEPARTMENT

NORTH END WATER POLLUTION CONTROL CENTRE  
SLUDGE DIGESTION EXPANSION  
LAND DRAINAGE SEWER AND ROAD CONSTRUCTION PLAN AND PROFILE  
RELEASED FOR CONSTRUCTION: [Signature]  
DATE: 17/6/85  
SCALE: AS SHOWN  
DRAWING NO: NEP-1298